

TRANSPORT CHAIN & CHAIN BINDERS



TRANSPORT CHAIN

Transport Chain Assemblies

Grade 70 | Chain Assemblies

- High strength carbon alloy steel
- Zinc plated gold chromate for corrosion resistance
- Clevis hooks made of heat treated alloy steel
- Designed for over-the-road transportation
- Packed in polybag with upc and warning label, 10 per drum

Color Coded Barrels for Easier Identification!



Also available in single piece stackable and reusable plastic storage tub. (SP)



5/16^{IN} Chain
4,700 lbs WLL (2,131 kg)

Part Number	Length (Feet)	Package Type
45881-10-16	16'	drum/bag
45881-10-16-SP	16'	plastic tub
45881-10-20	20'	drum/bag
45881-10-20-SP	20'	plastic tub
45881-10-25	25'	drum/bag
45881-10-25-SP	25'	plastic tub

3/8^{IN} Chain
6,600 lbs WLL (2,990 kg)

Part Number	Length (Feet)	Package Type
45881-11-16	16'	drum/bag
45881-11-16-SP	16'	plastic tub
45881-11-20	20'	drum/bag
45881-11-20-SP	20'	plastic tub
45881-11-25	25'	drum/bag
45881-11-25-SP	25'	plastic tub

1/2^{IN} Chain
11,300 lbs WLL (5,126 kg)

Part Number	Length (Feet)	Package Type
45881-13-20	20'	drum/bag
45881-13-25	25'	drum/bag

Grade 70 | XHD Chain Assembly

3/8^{IN} Chain w/G80 Hooks
6,600 lbs WLL (2,990 kg)

- High strength carbon alloy steel
- Zinc plated gold chromate for corrosion resistance
- Grade 80 clevis hooks made of heat treated alloy steel
- Designed for over-the-road transportation
- Stamped aluminum Working Load Limit tag
- Individually UPC coded, packed in heavy duty cardboard box

Part Number	Length (Feet)	Package Type
50364-38-10	10'	box
50364-38-20	20'	box



19% more material in the neck for added strength

50529-11-10-BX | Grade 100 Chain Assembly

3/8^{IN} x 10^{FT}
8,800 lbs WLL (4,000 kg)

- Heat treated high carbon alloy steel
- Rugged black lacquer finish
- Blue powder coated clevis grab hooks
- Stamped aluminum Working Load Limit tag
- Individually UPC coded, packed in heavy duty cardboard box



Grade 80 J-Hook Chain Assemblies

3/8^{IN} Chain
7,100 lbs WLL (3,221 kg)

- Great for securing large equipment
- Heat treated high carbon alloy steel
- Rugged black lacquer finish
- Yellow powder coated J-hooks
- Stamped aluminum Working Load Limit tag
- UPC coded, packed in heavy duty cardboard boxes in quantity listed

Attaches quickly to built-in Anchor Point

Part Number	Length (Feet)	Chain End Hardware	Chain Grade	Package Qty
50378-10-10	10'	15" J-Hook G80 Clevis	G80	1
50378-11-05-2	5'	15" J-Hook	G80	2
50739-10-05-2	5'	8" J-Hook	G80	2



50378-10-10



50378-11-05-2



50739-10-05-2

Grade 43 | Chain Assemblies

3/8^{IN} Chain
5,400 lbs WLL (2,449 kg)

- High strength carbon steel
- Great for general tie-down use & logging
- Packed in polybag with upc and warning label, 10 per drum



Part Number	Length (Feet)	Package Type
49958-38-20	20'	drum/bag
49958-38-20-SP	20'	plastic tub

Manufactured to NACM Standards. Chain Links marked every 6 inches. NOTE: Not for overhead lifting.

TRANSPORT CHAIN & CHAIN HARDWARE

Grade 70 Bulk Chain (No Hooks)

45880-12
1/4" x 400'FT
3,150 lbs WLL (1,430 kg)



45880-10
5/16" x 400'FT
4,700 lbs WLL (2,131 kg)



45880-11
3/8" x 200'FT
6,600 lbs WLL (2,990 kg)



45880-13
1/2" x 100'FT
11,300 lbs WLL (5,126 kg)

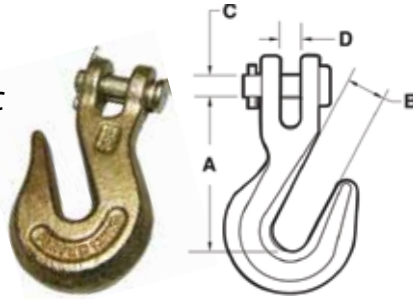


Manufactured to NACM Standards. Chain Links marked every 6 inches. NOTE: Not for overhead lifting.

Hooks

Clevis Hooks | Grade 70

- Forged & heat treated
- Individually polybagged w/UPC
- Retail pack quantity 1

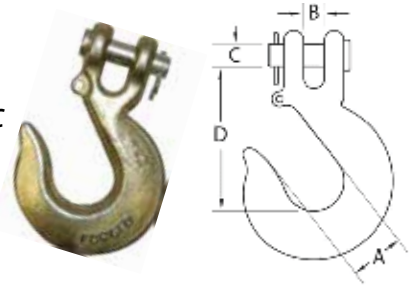


Part Number	Size (Inches)	Working Load Limit (lbs)	Working Load Limit (kg)
45946-12	1/4"	3,150	1,430
45946-10	5/16"	4,700	2,131
45946-11	3/8"	6,600	2,990
45946-13	1/2"	11,300	5,126

Dimensions		A	B	C	D
	45946-12	2.00	.40	.31	.36
	45946-10	2.30	.43	.38	.38
	45946-11	2.70	.50	.48	.44
45946-13	3.20	.66	.63	.75	

Slip Hooks | Grade 70

- Forged steel with zinc plated gold chromate
- Individually polybagged w/UPC
- Retail pack quantity 1

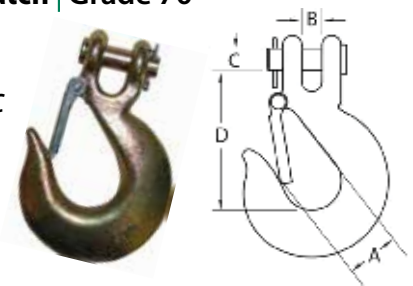


Part Number	Size (Inches)	Working Load Limit (lbs)	Working Load Limit (kg)
50019-10	1/4"	3,150	1,430
50019-11	5/16"	4,700	2,131
50019-12	3/8"	6,600	2,990
50019-13	1/2"	11,300	5,126

Dimensions		A	B	C	D
	50019-10	.94	.44	.38	2.44
	50019-11	1.06	.41	.44	2.72
	50019-12	1.31	.59	.47	3.25
50019-13	1.75	.75	.63	4.00	

Slip Hooks with Safety Latch | Grade 70

- Forged steel with zinc plated gold chromate
- Individually polybagged w/UPC
- Retail pack quantity 1



Part Number	Size (Inches)	Working Load Limit (lbs)	Working Load Limit (kg)
50019-20	1/4"	3,150	1,430
50019-21	5/16"	4,700	2,131
50019-22	3/8"	6,600	2,990
50019-23	1/2"	11,300	5,126

Dimensions		A	B	C	D
	50019-20	.94	.44	.38	2.44
	50019-21	1.06	.41	.44	2.72
	50019-22	1.31	.59	.47	3.25
50019-23	1.75	.75	.63	4.00	

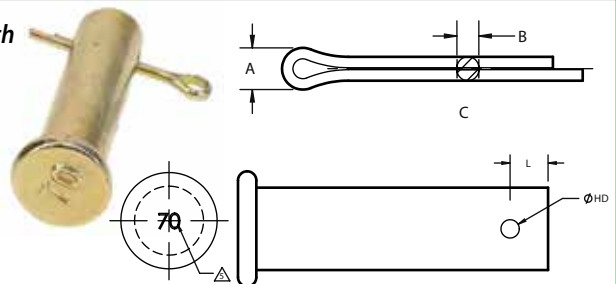
Clevis Pin Replacements

High strength steel replacement clevis pins are designed to meet the strength requirements of Grade 70 hooks & their heads are marked G7 or 70.

50412-100 Packaged Kit includes one zinc plated clevis pin & cotter pin for 5/16 Grade 70 chain hook. Weight: .17 lbs / .07 kg

50412-102 Packaged Kit includes one zinc plated clevis pin & cotter pin for 3/8 Grade 70 chain hook. Weight: .22 lbs / .09 kg

50412-103 Packaged Kit includes one zinc plated clevis pin & cotter pin for 1/2 Grade 70 chain hook. Weight: .23 lbs / .10 kg



CHAIN BINDERS

All traditional chain load binders are constructed of drop forged steel for strength and durability and are designed for use with Grade 70 transport chain. They are available in traditional Lever, Recoilless and Ratcheting models, and are finished in an E-coat paint. They meet or exceed WSTDA T-6 standards.

Standard Ratchet | Built-in Thread Safety Stops

- 1 Piece handle
- Pinned barrel
- Retail pack 1
- Bulk packaged with UPC

Part Number	Size (Inches)	Working Load Limit (lbs)
45943-22	1/4" - 5/16"	2,600
45943-20	5/16" - 3/8"	5,400
45943-20HD	5/16" - 3/8"	6,600
45943-21	3/8" - 1/2"	9,200
45943-23	1/2" - 5/8"	13,000



Super Smooth Ratcheting Action

XHD™ Ratchet | Built-in Thread Safety Stops

- High visibility yellow E-coat
- Drop forged steel
- 2 Piece handle
- Welded barrel
- Retail pack 1
- Bulk packaged with UPC

Part Number	Size (Inches)	Working Load Limit (lbs)
50360-20	5/16" - 3/8"	6,600
50360-21	3/8" - 1/2"	9,200



Superior Durability

50117-10 | Lever Binder Lock

Lock your chain & lever in place after tightening with our Lever Binder Lock.



Mini Chain Tightener

- Retail pack 1
- Bulk packaged with UPC

Part Number	Finish	Working Load Limit (lbs)
50025-10	E-Coat	375



Standard Lever | Drop Forged Steel Construction

- Retail pack 1
- Bulk packaged with UPC

Part Number	Size (Inches)	Working Load Limit (lbs)
45943-12	1/4" - 5/16"	2,600
45943-10	5/16" - 3/8"	5,400
45943-10HD	5/16" - 3/8"	6,600
45943-14*	5/16" - 3/8"	5,400
45943-11	3/8" - 1/2"	9,200
45943-13	1/2" - 5/8"	13,000



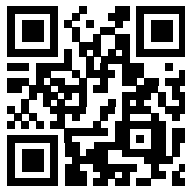
* Recoilless Lever Chain Binder

EZ Binders™

Use with 5/16^{IN} - 3/8^{IN} Chain

- Up to 90% faster than an equivalent ratchet binder
- Quick acting ratchet design is easy to tension and release
- Extra long handle with contour grip
- Heavy gauge steel construction
- Corrosion resistant electro zinc plating
- Free wheel function for quick take up
- Swiveling grab hooks for ease of use
- 12" Take up

Part Number	Description	Working Load Limit (lbs)
50140-10	EZ Binder ⁵⁴⁰⁰	5,400
50140-11	EZ Binder ⁶⁶⁰⁰	6,600



Scan this QR Code to see a video on how easy it is to use.

Works like a Ratchet Strap!

